



VISION MARINE VANMES51

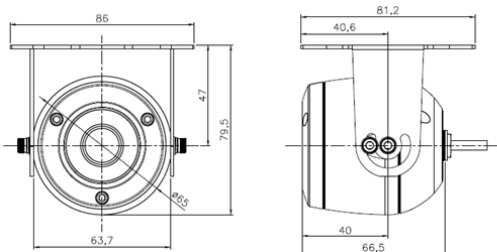
1080p HD-Analogue Compact “Engine Room”
Camera



Key Features

- 2.0 Mega pixel 1/2.8" SONY progressive scan CMOS image sensor for excellent image quality
- Special mechanical hardware
- 2.9mm MP lens
- Low light, Ultra high sensitivity camera
- Max. Transmission Distance : 600M Over Coaxial Cable
- Supports image resolutions up to 1920 x 1080P (30fps)
- Supports D-WDR, Defog, 2D+3DNR, Slow Shutter Control (Sens-Up)
- HD-Analogue Video Output
- Dynamic Motion Detection
- Privacy Masking up to 4 areas
- Tool-Free 3-Axis
- 12VDC
- Incredible Durability against Tremendous Heating (-20 ~ +90 Degree)

Dimensions (Unit :mm)



Specifications

MODEL	VANMES51
Camera	
Image sensor	Sony 1/2.8 inch 2.2MP Exmor R Starvis CMOS Sensor
H. Resolution	1100TV Lines
Total Pixels	1945(H) x 1109(V) 2.16 Megapixel
Effective Pixels	1945(H) x 1097(V) 2.13 Megapixel
S/N Ratio	More than 52dB (AGC OFF / Weight ON)
Min. Illumination	0.1 Lux
Day & Night	COLOR
Lens	2.9mm / Megapixel Lens
OSD	
PRIVACY MASK	ON/OFF (4 zone)
MOTION Detection	ON/OFF (4 zone)
MIRROR	OFF / MIRROR / V-FLIP / MIRROR
FREEZE	ON/OFF
Min. Illumination	0.1Lux
White Balance	AWB / ATW / AWC -->SET / INDOOR / OUTDOOR / Manual (2,000°K ~ 20,000°K)
Shutter Speed	AUTO / MANUAL (1/30 ~ 1/50,000 NTSC, 1/25 ~ 1/50,000 PAL)
Sens-up	AUTO / OFF (Selectable Limit x2 ~ x60)
BLC	ON/OFF/HSBLC/D-WDR
Gain Control	0 – 15 Level
2D/3DNR	ON / OFF (0~100 Level)
DAY / NIGHT	AUTO / COLOR / BLACK & WHITE / EXT
SHARPNESS	0 ~ 10 (Level adjustable)
D-WDR	ON/OFF(Level Control)
Flickerless	AUTO/ON/OFF
LENS Shading	ON / OFF
DEFOG	ON / OFF
Language	ENG / ARB / HEB / JPN / KOR / TUR / NED / POR / RUS / POL / SPA / ITA / FRA / GER / CHN2 / CHN1
Physical	
Power Source	12VDC
Operating current	120mA
Net Weight	520g
Dimension	65mm(Dia. Ø) x79.5mm(H)
General	
Operating Temperature	-20 degree~ 100 degree Celsius

* Specifications are subject to change without prior notice.